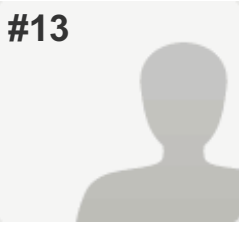


#13



**COMPLETE**

**Collector:** Web Link (Web Link)  
**Started:** Friday, March 06, 2015 10:55:40 AM  
**Last Modified:** Friday, March 06, 2015 11:16:33 AM  
**Time Spent:** 00:20:53  
**IP Address:** 168.166.80.208

PAGE 1

<b>Q1: Jurisdiction</b>	Missouri
-------------------------	----------

PAGE 2: Business Organization Section

<b>Q2: Number of domestic business and professional corporations filed during the year</b>	3,960
<b>Q3: Number (or % of total) from #1 that were filed electronically</b>	<i>Respondent skipped this question</i>
<b>Q4: Number of foreign business and professional corporations qualified during the year</b>	2,512
<b>Q5: Number (or % of total) from #3 that were filed electronically</b>	<i>Respondent skipped this question</i>
<b>Q6: Total number of domestic and foreign business and professional corporations on file (Good standing or active) on this date.</b>	166,501
<b>Q7: Total revenue collected for the initial filing for domestic and foreign business and professional corporations during the year</b>	\$547,352
<b>Q8: Comments for Business and Professional section</b>	<i>Respondent skipped this question</i>
<b>Q9: Number of domestic nonprofit corporations filed during the year</b>	2,781
<b>Q10: Number (or % of total) from #8 that were filed electronically</b>	<i>Respondent skipped this question</i>
<b>Q11: Number of foreign nonprofit corporations filed during the year</b>	163

Annual Report of Jurisdictions 2014

<b>Q12: Number (or % of total) from #10 that were filed electronically</b>	<i>Respondent skipped this question</i>
<b>Q13: Total number of domestic and foreign nonprofit corporations on file (good standing or active) on this date</b>	46,865
<b>Q14: Total revenue collected for the initial filing for domestic and foreign nonprofit corporations during the year</b>	\$1,171,625
<b>Q15: Comments for Nonprofit section</b>	<i>Respondent skipped this question</i>
<b>Q16: Number of domestic limited liability companies filed during the year</b>	38,697
<b>Q17: Number (or % of total) from #15 that were filed electronically</b>	<i>Respondent skipped this question</i>
<b>Q18: Number of foreign limited liability companies qualified during the year</b>	2,985
<b>Q19: Number (or % of total) from #17 that were filed electronically</b>	<i>Respondent skipped this question</i>
<b>Q20: Total number of domestic and foreign limited liability companies on file (good standing or active) on this date</b>	447,503
<b>Q21: Total revenue collected for the initial filing for domestic and foreign limited liability companies during the year</b>	\$4,376,610
<b>Q22: Comments for LLC section</b>	<i>Respondent skipped this question</i>
<b>Q23: Number of domestic limited partnerships filed during the year</b>	222
<b>Q24: Number (or % of total) from #22 that were filed electronically</b>	<i>Respondent skipped this question</i>
<b>Q25: Number of foreign limited partnerships qualified during the year</b>	69
<b>Q26: Number (or % or total) from #24 that were filed electronically</b>	<i>Respondent skipped this question</i>

Annual Report of Jurisdictions 2014

<b>Q27: Total number of domestic and foreign limited partnerships on file (good standing or active) on this date</b>	<i>Respondent skipped this question</i>
<b>Q28: Total revenue collected for the initial filing for domestic and foreign limited partnerships during the year</b>	\$30,555
<b>Q29: Comments for LP section</b>	<i>Respondent skipped this question</i>
<b>Q30: Number of domestic limited liability partnerships filed during the year</b>	186
<b>Q31: Number (or % of total) from #29 that were filed electronically</b>	<i>Respondent skipped this question</i>
<b>Q32: Number of foreign limited liability partnerships qualified during the year</b>	42
<b>Q33: Number (or % of total) from #31 that were filed electronically</b>	<i>Respondent skipped this question</i>
<b>Q34: Total number of domestic and foreign limited liability partnerships on file (good standing or active) on this date</b>	<i>Respondent skipped this question</i>
<b>Q35: Total revenue collected for the initial filing of domestic and foreign limited liability partnerships during the year</b>	\$12,540
<b>Q36: Comments for LLP section</b>	
The fee for LLP's are determined by the number of partners listed. The amount of revenue collected is totaled from the base fee of 2 partners as the number of partners are not entered into the database.	
<b>Q37: Number of domestic limited liability limited partnerships filed during the year</b>	<i>Respondent skipped this question</i>
<b>Q38: Number (or % of total) from #36 that were filed electronically</b>	<i>Respondent skipped this question</i>
<b>Q39: Number of foreign limited liability limited partnerships qualified during the year</b>	<i>Respondent skipped this question</i>
<b>Q40: Number (or % of total) from #38 that were filed electronically</b>	<i>Respondent skipped this question</i>

Annual Report of Jurisdictions 2014

**Q41: Total number of domestic and foreign limited liability limited partnerships on file (good standing or active) on this date** *Respondent skipped this question*

**Q42: Total revenue collected for the initial filing for domestic and foreign limited liability limited partnerships during the year** *Respondent skipped this question*

**Q43: Comments for LLLP section**

We do not keep track of LLLP's as they are intertwined with LP's.

**Q44: Number of domestic general partnerships filed during the year** 35,742

**Q45: Number (or % of total) from #43 that were filed electronically** *Respondent skipped this question*

**Q46: Number of foreign general partnerships qualified during the year** *Respondent skipped this question*

**Q47: Number (or % of total) from #45 that were filed electronically** *Respondent skipped this question*

**Q48: Total number of domestic and foreign general partnerships on file (good standing or active) on this date** 212,215

**Q49: Total revenue collected for the initial filing of domestic and foreign general partnerships during the year** \$250,194

**Q50: Comments for General Partnerships section**

The above numbers are associated with what Missouri calls Fictitious Registrations. These entity types renew every 5 years so the totals will not be accurate

**Q51: Number of domestic business trusts filed during the year** *Respondent skipped this question*

**Q52: Number (or % of total) from #50 that were electronically filed** *Respondent skipped this question*

**Q53: Number of foreign business trusts filed during the year** *Respondent skipped this question*

**Q54: Number (or % of total) from #52 that were filed electronically** *Respondent skipped this question*

Annual Report of Jurisdictions 2014

<b>Q55: Total number of domestic and foreign business trusts on file (good standing or active) on this date</b>	<i>Respondent skipped this question</i>
<b>Q56: Total revenue collected for the initial filing of domestic and foreign business trusts during the year</b>	<i>Respondent skipped this question</i>
<b>Q57: Comments for Business Trusts section</b>	
Missouri does not recognize Trusts.	
<b>Q58: Number of incoming telephone calls handled for the year</b>	109,737
<b>Q59: Number of employees handling incoming telephone calls</b>	23
<b>Q60: Comments for Incoming Calls section</b>	<i>Respondent skipped this question</i>
<b>Q61: Number of full-time employees</b>	33
<b>Q62: Comments for Employees section</b>	
The number of full time employees is only employees that can process corporation documents and answer calls regarding those documents.	
<b>Q63: Do you currently accept filings electronically?</b>	Yes
<b>Q64: If YES to #62, please check all of the delivery options that apply. If No, please go to #64</b>	Direct Web Access
<b>Q65: If NO to # 62, do you expect to accept electronic filings in the near future?</b>	<i>Respondent skipped this question</i>
<b>Q66: If YES to #64, please check all of the delivery options that apply</b>	Other (explain in comments)
<b>Q67: Comments for Electronic Filings section</b>	<i>Respondent skipped this question</i>

**Q68: Do you accept filings electronically for any of the following?**

Domestic Initial Formation (articles, etc.)	Direct Web Access
Domestic Amendments	Direct Web Access
Foreign Initial Formation	Direct Web Access
Annual Reports	Direct Web Access
Name Reservations	Direct Web Access
Change of Registered Agent	Direct Web Access
Change of Registered Office	Direct Web Access

**Q69: Comments for #67**

The only type of documents not offered online is an amendment to a LLP due to the complicated fee structure.

**Q70: Do you provide electronic access to the following? Please check all that apply.**

Name Availability	Searching/Viewing
Copies of Entity Filings	Searching/Viewing
Certified Copies of Entity Filings	Searching/Viewing
Certificates of Existence or Good Standing	Searching/Viewing

**Q71: Fees and URLs for the above in #69**

Name availability - free, Plain copies - free, Certified copies (online) - \$10.00, Good standings - \$10.00.  
<http://s1.sos.mo.gov/business/corporations/forms>

**Q72: Do you provide electronic access to the following? Please check all that apply.**

Bulk Data	FTP
-----------	-----

**Q73: Fees and URLs for the above in #71**

Corporate Bulk data is free of charge.

**Q74: Provide the top 3 highlights during the period ending (challenges, accomplishments, developments)**

Missouri implemented a new business filing system which allows almost all filings to be submitted or filed online. Customer can upload attachments and submit to a filing queue for an employee to review

**Q75: Provide a top priority for your office in the next twelve months**

To get caught up with the back log of 3 weeks and to implement even more/better options for customers online.

Annual Report of Jurisdictions 2014

<b>Q76: Number of financing statements filed during the year</b>	93,121
<b>Q77: Number of other notices (EFSs, tax liens, etc.) filed during the year</b>	<i>Respondent skipped this question</i>
<b>Q78: Number (or % of total) from #1 and #2 that were filed electronically</b>	<i>Respondent skipped this question</i>
<b>Q79: Number of amendments, assignments, continuations, partial discharges or terminations filed during the year</b>	71,703
<b>Q80: Number (or % of total) from #4 that were filed electronically.</b>	<i>Respondent skipped this question</i>
<b>Q81: Total number of *active financing statements on file on this date (*a UCC record that has not reached the 1-year anniversary date of its lapse)</b>	<i>Respondent skipped this question</i>
<b>Q82: Total revenue collected during the year</b>	<i>Respondent skipped this question</i>
<b>Q83: Comments for Filings section</b> #4 only pertains to amendments	
<b>Q84: Number of search requests processed during the year</b>	<i>Respondent skipped this question</i>
<b>Q85: Number of searches (or % of total) from #9 performed by filing office personnel</b>	<i>Respondent skipped this question</i>
<b>Q86: Number of searches (or % of total) from #9 conducted online by end users</b>	<i>Respondent skipped this question</i>
<b>Q87: Total revenue from searches collected during the year</b>	<i>Respondent skipped this question</i>
<b>Q88: Comments for Searches section</b> We do not track searches conducted online or internally	
<b>Q89: Number of incoming telephone calls handled for the year</b>	5,819
<b>Q90: Number of employees handling incoming telephone calls</b>	7

Annual Report of Jurisdictions 2014

<b>Q91: Comments for Telephone Calls section</b>	<i>Respondent skipped this question</i>
<b>Q92: Number of full-time employees</b>	7
<b>Q93: Comments for Employees section</b>	<i>Respondent skipped this question</i>
<b>Q94: Do you currently accept filings electronically?</b>	Yes
<b>Q95: If yes to #19, please check all of the delivery options that apply</b>	Direct Web Access, B2B
<b>Q96: If you answered NO to #19, do you expect to accept filings electronically in the near future?</b>	<i>Respondent skipped this question</i>
<b>Q97: IF YES to #21, please check all that may apply</b>	<i>Respondent skipped this question</i>
<b>Q98: Comments for Electronic Filings section</b>	<i>Respondent skipped this question</i>
<b>Q99: Do you provide electronic access to the following? Please check all that apply.</b>	
Information	Searching/Viewing
Copies	Searching/Viewing
Certified Information	Searching/Viewing
Certified Copies	Searching/Viewing
<b>Q100: Please provide fees, if applicable, and URL for service for #24</b>	
Certified searches are \$27.00 + \$1.00 for each page <a href="http://s1.sos.mo.gov/ucc/forms">http://s1.sos.mo.gov/ucc/forms</a>	
<b>Q101: Do you provide electronic access to the following? Please check all that apply.</b>	
Bulk Data	FTP
Bulk Copies	FTP
<b>Q102: Please provide fees, if applicable, and URL for service for #26</b>	
UCC Bulk Data is free of charge. UCC Bulk copies are \$2,500 a month	
<b>Q103: Comments for Electronic Accessibility section</b>	<i>Respondent skipped this question</i>



Annual Report of Jurisdictions 2014

**Q104: Provide the top 3 highlights during the period ending (challenges, accomplishments, developments)**

*Respondent skipped this question*

**Q105: Provide a top priority for your office in the next twelve months**

*Respondent skipped this question*